

ParGlide Linear Motion

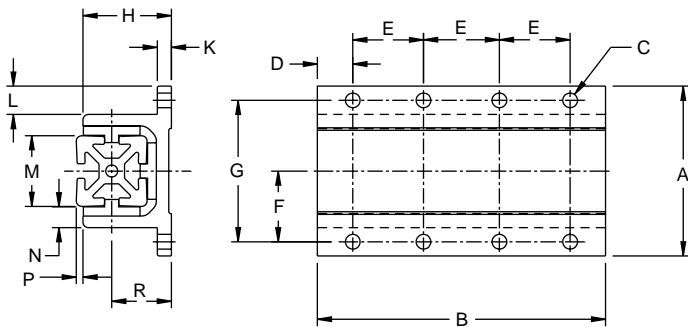
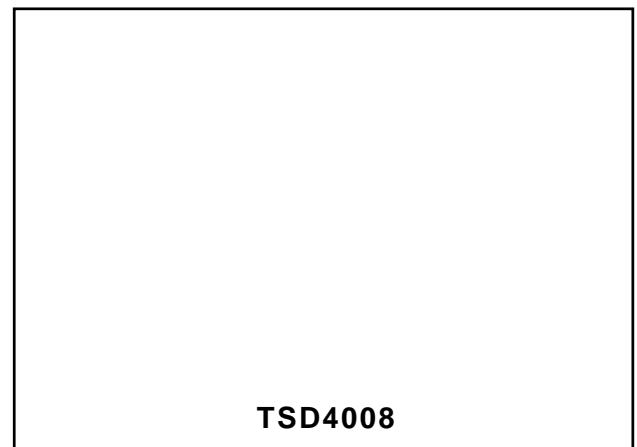
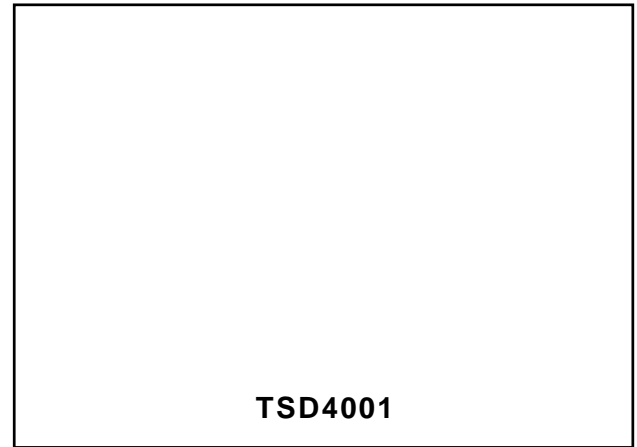
Guide Units

These 40 mm double flange units offer low cost linear guidance. They utilize glide pads oriented within T-slots. You make your own guidance device. You provide the power - pneumatic, electro-mechanical or manual.

Shims are available to provide a more precise fit.

Optional clamping mechanism can be added as required. Each clamp requires a machined hole.

Material: Aluminum, Clear Anodized
UHMW glide pads



Part No.	A	B	C	D	E	F	G
TSD4001	96 (3.78)	80 (3.15)	4xØ8.3 (Ø.328)	20 (.787)	40 (1.575)	40 (1.575)	80 (3.15)
TSD4008	96 (3.78)	163 (6.42)	8xØ8.3 (Ø.328)	20 (.787)	40 (1.575)	40 (1.575)	80 (3.15)
Part No.	H	K	L	M	N	P*	R
TSD4001	50 (1.97)	8 (.315)	16 (.63)	40 (1.575)	12 (.472)	4 (.157)	34 (1.34)
TSD4008	50 (1.97)	8 (.315)	16 (.63)	40 (1.575)	12 (.472)	4 (.157)	34 (1.34)

* Add 40mm (1.575") when using TSV/TSL/TSH4080 extrusion.

Note: All dimensions in mm (in)

ParGlide Linear Motion

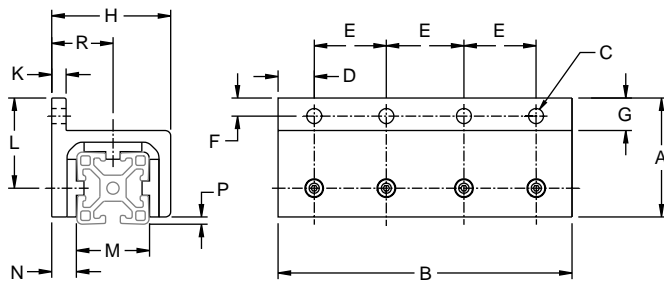
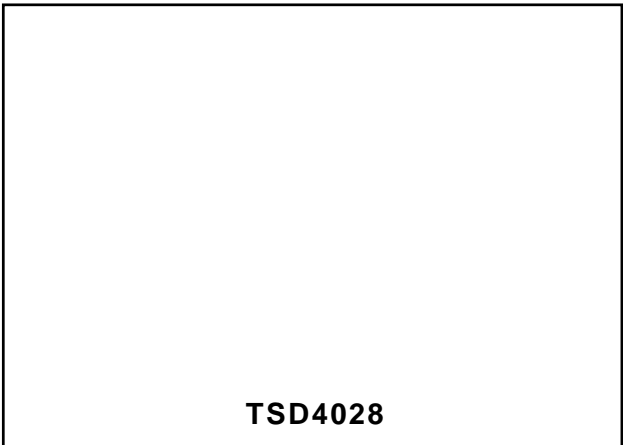
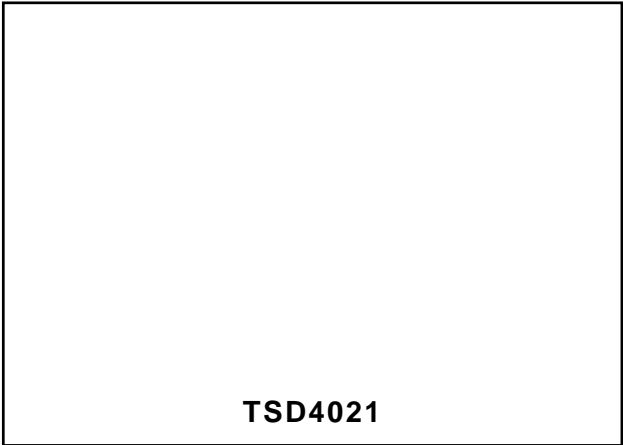
Guide Units

These 40 mm single flange, side mount units offer low cost linear guidance. They utilize glide pads oriented within T-slots. You make your own guidance device. You provide the power - pneumatic, electro-mechanical or manual.

Shims are available to provide a more precise fit.

Optional clamping mechanism can be added as required. Each clamp requires a machined hole.

Material: Aluminum, Clear Anodized
UHMW glide pads



Part No.	A	B	C	D	E	F	G
TSD4021	66 (2.60)	80 (3.15)	2xØ8.3 (Ø.328)	21.5 (.848)	40 (1.575)	10 (.394)	18 (.71)
TSD4028	66 (2.60)	163 (6.42)	4xØ8.3 (Ø.328)	21.5 (.848)	40 (1.575)	10 (.394)	18 (.71)
Part No.	H	K	L	M	N	P*	R
TSD4021	66 (2.60)	8 (.315)	50 (1.97)	40 (1.575)	14 (.551)	4 (.157)	34 (1.339)
TSD4028	66 (2.60)	8 (.315)	50 (1.97)	40 (1.575)	14 (.551)	4 (.157)	34 (1.339)

* Add 40mm (1.575") when using TSV/TSL/TSH4080 extrusion.

ParGlide Linear Motion

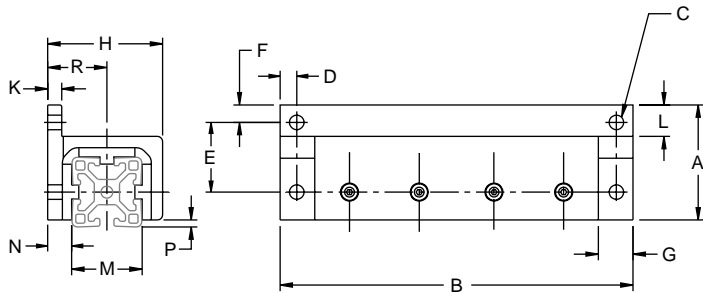
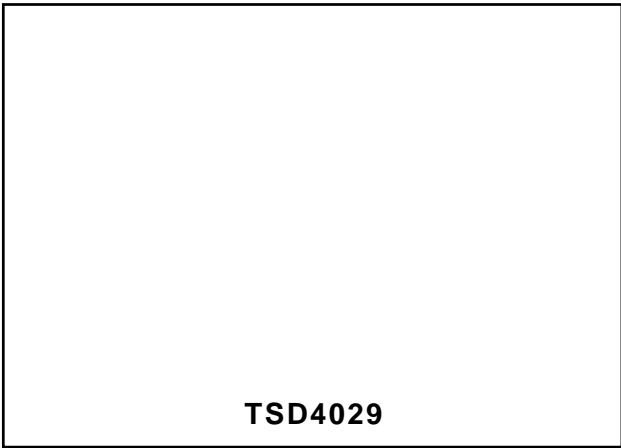
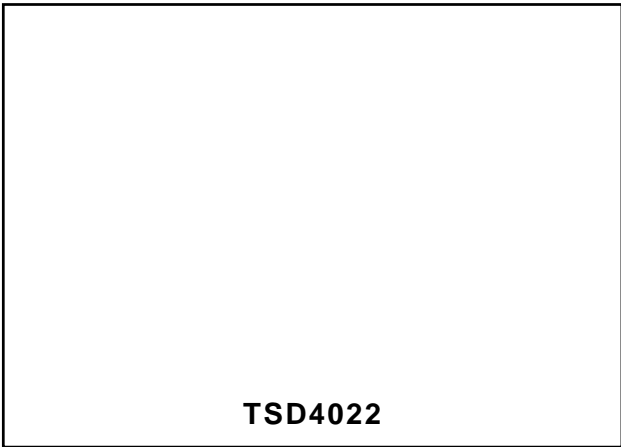
Guide Units

These 40 mm single flange, easy-mount units offer low cost linear guidance. They utilize glide pads oriented within T-slots. You make your own guidance device. You provide the power - pneumatic, electro-mechanical or manual.

Shims are available to provide a more precise fit.

Optional clamping mechanism can be added as required. Each clamp requires a machined hole.

Material: Aluminum, Clear Anodized
UHMW glide pads



Part No.	A	B	C	D	E	F	G
TSD4022	60 (2.60)	120 (4.72)	2xØ8.3 (Ø.328)	10 (.394)	40 (1.575)	10 (.394)	20 (.79)
TSD4029	66 (2.13)	203 (4.06)	4xØ8.3 (Ø.328)	10 (.394)	40 (1.575)	10 (.394)	20 (.79)
Part No.	H	K	L	M	N	P*	R
TSD4022	66 (2.60)	8 (.315)	18 (.709)	40 (1.575)	14 (.551)	4 (.157)	34 (1.339)
TSD4029	66 (2.60)	8 (.315)	18 (.709)	40 (1.575)	14 (.551)	4 (.157)	34 (1.339)

* Add 40mm (1.575") when using TSV/TSL/TSH4080 extrusion.

ParGlide Linear Motion

High Cycle Units

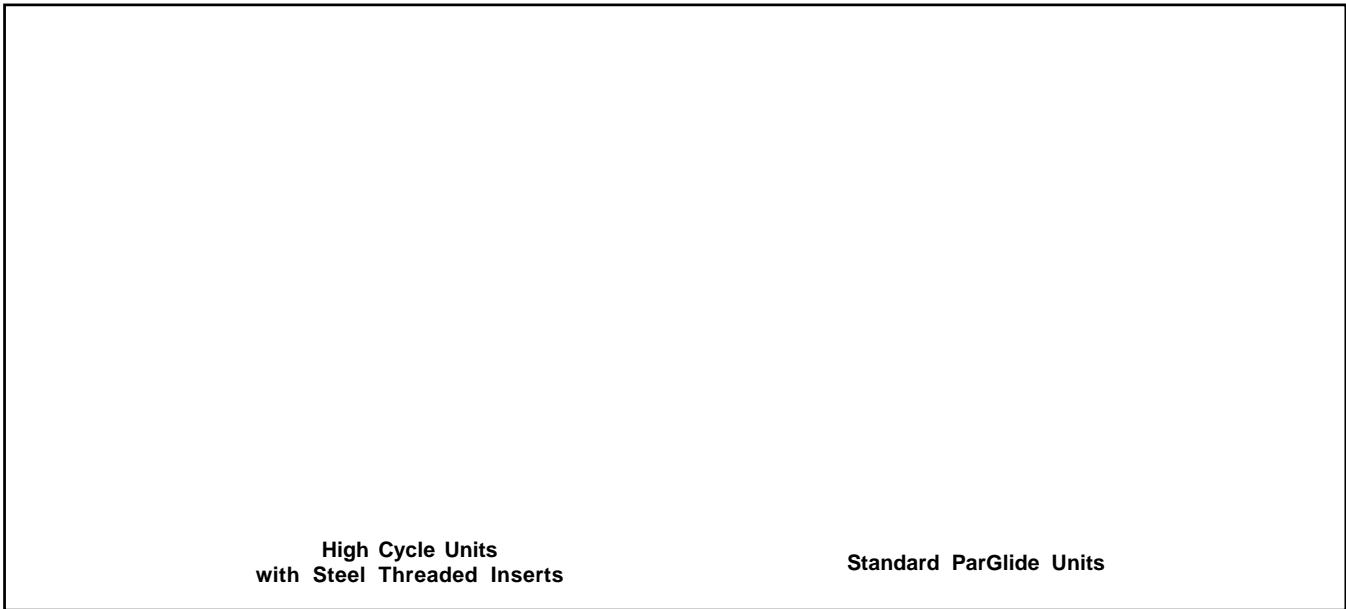
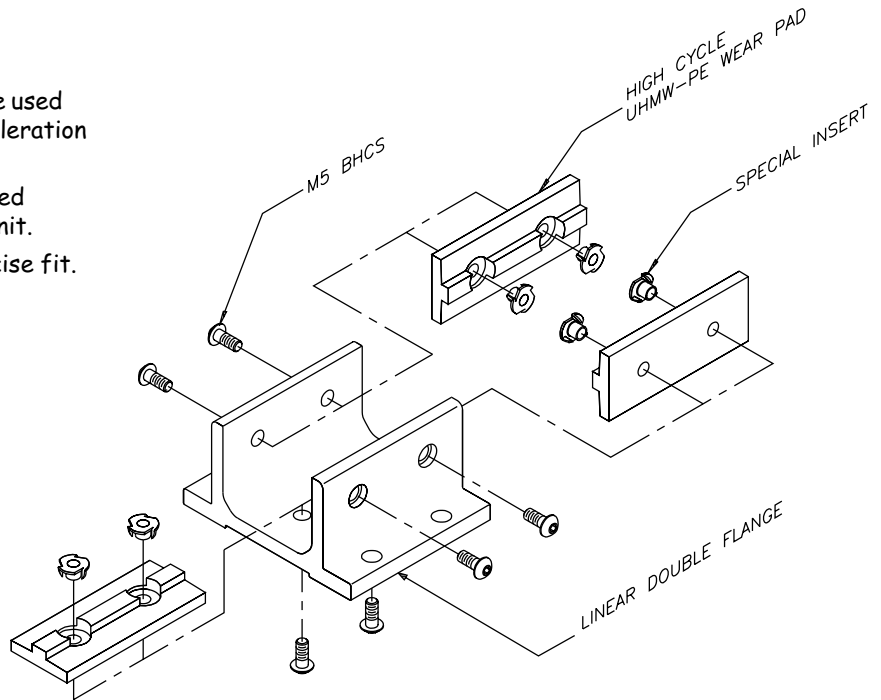
High Cycle ParGlide Units

These specially designed ParGlide units are used in high cycle applications where rapid acceleration and deceleration takes place.

High cycle ParGlide utilizes a steel threaded insert to mount the pad to the Par Glide unit.

Shims are available to provide a more precise fit.

Material: Aluminum, Clear Anodized
UHMW Glide Pads



Part No.	Style	Profile
TSD4001-HC	Top Mount, Single	40 x 40
TSD4008-HC	Top Mount, Double	40 x 40
TSD4021-HC	Side Mount Flush, Single	40 x 40
TSD4022-HC	Side Mount Ext., Single	40 x 40
TSD4028-HC	Side Mount Flush, Double	40 x 40
TSD4029-HC	Side Mount Ext., Double	40 x 40

ParGlide Linear Motion

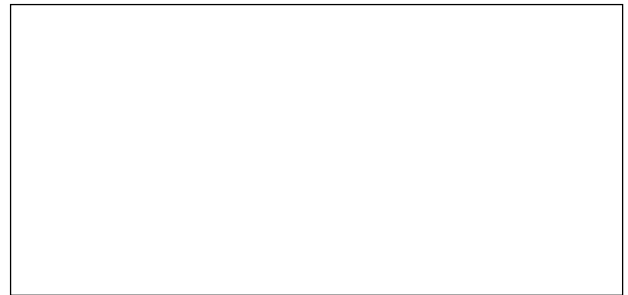
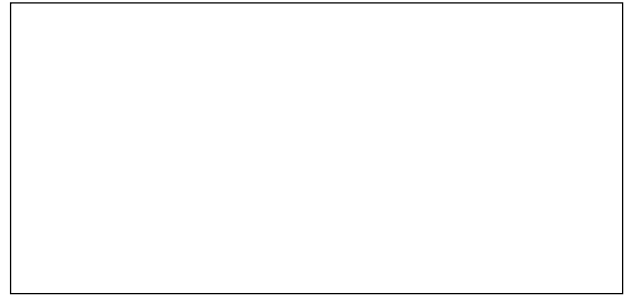
Glide Pads & Shims

Glide Pads

Glide pads let you custom design a low friction guidance unit.

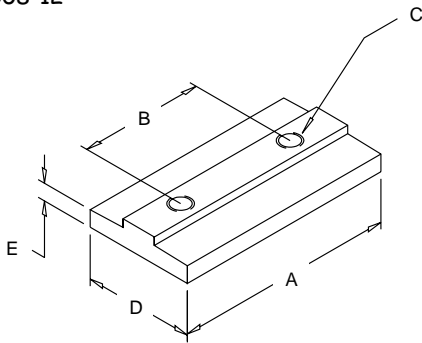
Material: UHMW

Part No.	Description	Profiles
TSD4000-2	Pretapped	40/80
TSD4000-3	Untapped	40/80



Recommended Fastener:

TSF4008-12



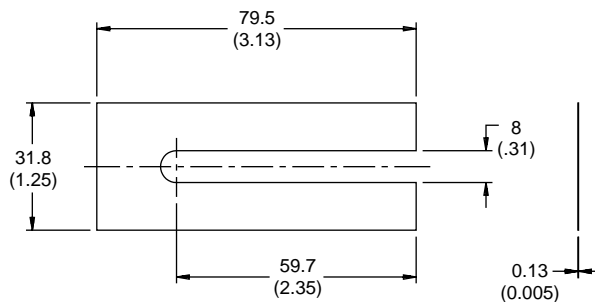
Part No.	A	B	C	D	E
TSD4000-2	80 (3.15)	40 (1.575)	M5	32 (1.26)	5.3 (.207)
TSD4000-3	300 (11.81)	NA	NA	32 (1.26)	5.3 (.207)

Shims for Extrusion Profiles

Shims provide a more precise fit for ParGlide. Five shims are supplied in each package.

Material: Steel

TSD4005 for 40mm Profiles



Note: All dimensions in mm (in)

ParGlide Linear Motion

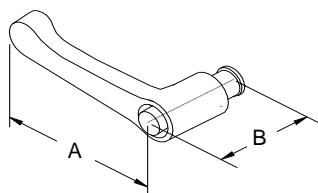
Handles

These clamp accessories provide positioning and adjustment for ParGlide units.

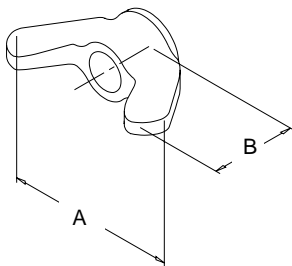
Machining Service: ParGlide extrusions and pads can be drilled to accept clamp accessories. See Machining section.

Part No.	Description	Profile
TSD0011	Ratcheting L-handle	40 & 80

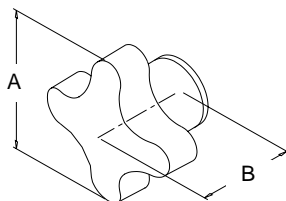
Part No.	A	B
TSD0011	63 (2.48)	32.8 (1.29)



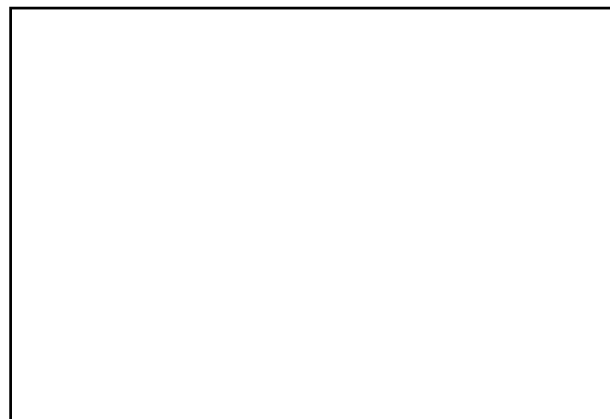
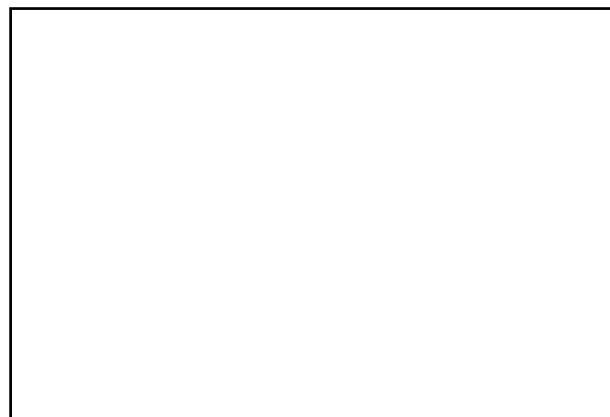
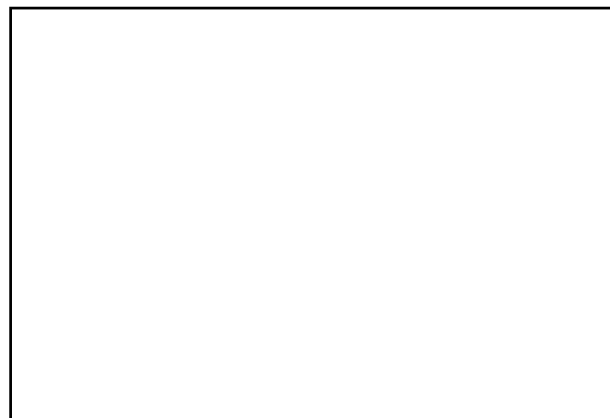
Part No.	A	B
TSD0013	38 (1.50)	20.5 (.81)



Part No.	A	B
TSD0015	40 (1.57)	26.7 (1.05)



Note: All dimensions in mm (in)



ParGlide Linear Motion

Pressure Plates

Pressure plates are used to encapsulate the chamber within a profile. The plates can be attached to the end or the side of a profile. Each plate is shipped with a nitrile gasket for sealing. To apply pressure to a TSL4040 profile, an 1/8" NPT port may be tapped at the end of the profile. Specify TSE0044 and refer to the Machining section for details.

Material: 6061-T6 Aluminum Alloy, Clear Anodized

Maximum Pressure: 150 psi air.

Machining: Attachment of Pressure plate to a profile end requires profile end tapping service. Refer to Machining section for details. A cross communication drilling is required for mounting to the side of a profile (customer supplied).



Part No.	Weight	"A"	Holes	
			kg	lb
TST4000	Blank	2	0.12	0.26
TST4001	1/8" NPT	2	0.11	0.25
TST4002	1/4" NPT	2	0.11	0.25
TST4004	3/8" NPT	2	0.11	0.25
TST4006	1/4" BSPP	2	0.12	0.26
TST4008	1/2" NPT	2	0.11	0.25
TST8000	Blank	4	0.25	0.54
TST8002	1/2" NPT	4	0.23	0.51
TST8006	1/2" BSPP	4	0.23	0.51
TST8008	1" NPT	4	0.21	0.46

RECOMMENDED FASTENERS

(Quantities as required by number of holes.)

For attachment to 40/80mm profile end:

Metric	Inch
TSF4008-25 BHSCS TSF1108 Lock Washer	TSF9031-100 BHSCS TSF6131 Lock Washer

GASKETS

Part No.	Profile
TST4000-2	40 x 80
TST8000-2	80 x 80

For attachment to 40/8 mm profile T-slots:

Metric	Inch
TSF4008-18 BHSCS TSF3008 Standard T-Nut or TSF3208 Drop-in T-Nut	TSF9031-063 BHSCS TSF8031 Standard T-Nut or TSF8231 Drop-in T-Nut

INTERNAL VOLUME

For internal volumes, see data for individual profiles in the Machining section

ParGlide Linear Motion

Conduit Plates

Conduit Plates provide a method of attaching 1/2" or 3/4" conduit to the end of the 80 x 80 profile.

Material: 6061-T6 Aluminum Alloy, Clear Anodized

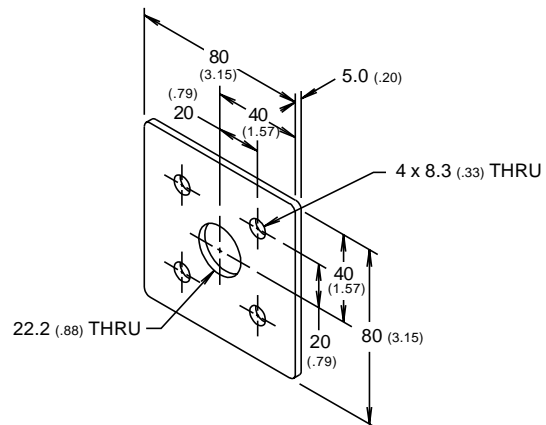
Weight: .05 kg (.10 lb)

Machining Required: Attachment of the Conduit Plate to an 80 x 80 profile end requires profile end tapping service no. TSE0040 or TSE1040.

Part No.	Conduit Size
TSA8020	12.7 mm (.50 in)
TSA8022	19.1 mm (.75 in)

RECOMMENDED FASTENERS:

Metric	Inch
(4) TSF4008-16 BHSCS	(4) TSF9031-063 BHSCS
(4) TSF1108 Lock Washer	(4) TSF6131 Lock Washer



Parts Containers

Plastic part containers are available in three sizes. Attachment to the profile T-slot is accomplished with a parts container hanger (see below).

Material: Polypropylene

Color: Blue

Part No.	Length		Width		Depth		Weight		Capacity	
	cm	in	cm	in	cm	in	kg	lb	kg	lb
TSA0116	13.6	5.38	10.4	4.12	7.6	3.00	0.07	0.16	4.5	10
TSA0118	18.7	7.38	10.4	4.12	7.6	3.00	0.11	0.25	4.5	10
TSA0120	27.6	10.88	13.9	5.50	12.7	5.00	0.29	0.63	13.6	30

Parts Container Hanger

Aluminum parts container hanger attaches to 40 and 80 mm profiles only. Part is 12" long. Fasteners included.

Part No.: TSA0124



ParGlide Linear Motion

Tooling

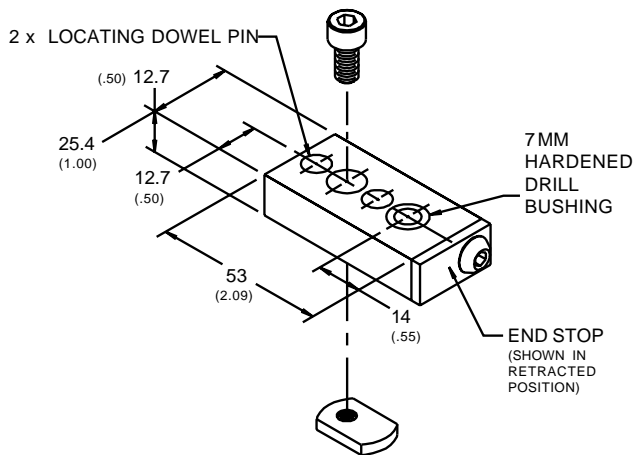
Drill Jigs

Drill Jigs provide a simple and effective method of accurately positioning 7mm diameter access holes on an extrusion profile. Each jig is supplied with locating dowel pins and fasteners to secure it in place for accurate and repeatable hole locations. Also, an end stop is provided for quick positioning at the end of a profile when drilling access holes for the End Fastening Assembly.

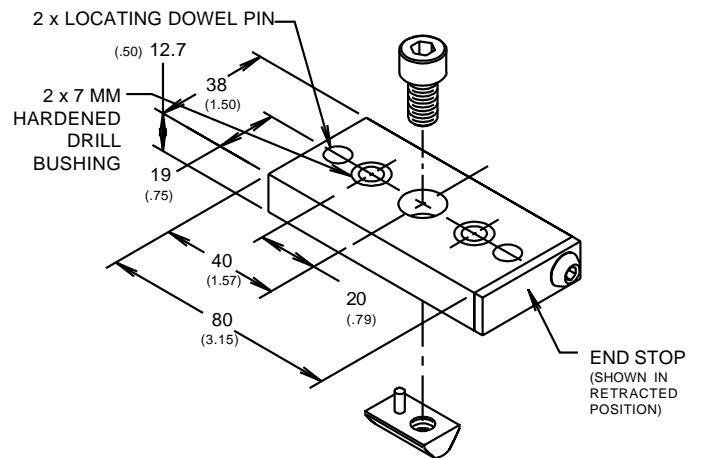


Part No.	Profiles
TSE0102	40 x 40 and 80 x 80
TSE0104	40 x 80 and 80 x 80

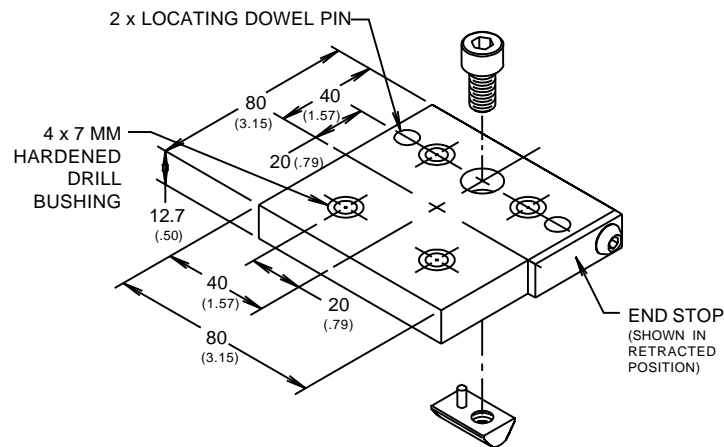
Part No. TSE0100



Part No. TSE0102



Part No. TSE0104



Note: All dimensions in mm (in)